

03/2005

AIA Baltimore Chooses 13 Design Award Winners

Thirteen proved to be the lucky number for AIA Baltimore architects when the chapter extended kudos and congratulations to 13 projects—8 built and 5 unbuilt—late last year. Following are comments from jury members Stephen Kieran, FAIA; Frank Matero, AIA; and Ali Rahim, AIA, all of whom teach at the University of Pennsylvania.

reference

Photos courtesy of AIA Baltimore.

Grand Design Award

Brown Center, Maryland Institute College of Art, Baltimore, by Ziger/Snead LLP and Charles Brickbauer, AIA

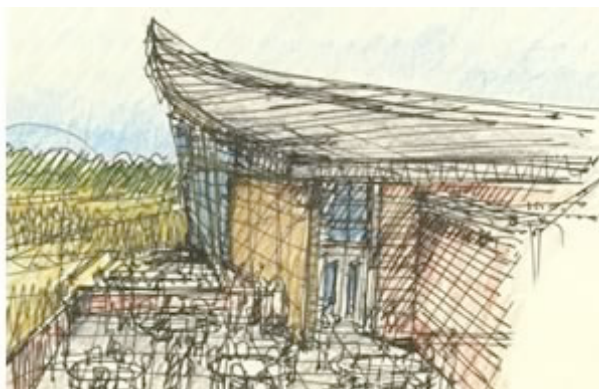
"This building responds well to a difficult site and juncture in the city. It negotiates its position well between its neighbors—a bridge and an old building. It responds well to the original building while creating an outward focus of its own. The program for the college's digital arts department and the building's geometry relate and are accomplished well."



Design Awards

Homestead National Monument of America, National Parks Service (unbuilt), Beatrice, Neb., by GWWO Inc./Architects

"The roof surface peeling off the ground plane is a wonderfully symbolic commemoration of what it means to homestead. This strong, emerging idea retains the prairie landscape, while the excellent site plan creates a square, one-acre parking lot, referring to 1/160th of the original plot granted by the Homestead Act 140 years ago."



Maryland Historical Society, Gallery, and Entry Addition, Maryland Historical Society, Baltimore, by Ziger/Snead LLP



"The overall site plan knits the campus together very well. Through its contrasts, the addition is beautifully responsive to the existing, diverse buildings. The exhibit space is really elegant. This must be a great client with whom to negotiate such a fantastic solution. It helps the campus continue to contribute to the city architecturally."



**Mechanical Hall
Renovation, University of
Delaware, Newark, Del., by
Ziger/Snead LLP**

"This shop building has been taken back to its guts—the original planks and framing. The carefully inserted new form responds well to the new program. This insertion bleeds out nicely into the new entry. The project benefits from a light-handed touch to detailing. The architect 'knew when to put his hands in his pockets.'"



**Sanctuary Restoration,
Lovely Lane United
Methodist Church,
Baltimore, by Kann &
Associates, Inc.**

"This is an excellent restoration project with a sophisticated and high level of both artistic research and scientific investigation. The architect had the courage to follow through with a literal restoration of the incredible quality of the original building."



**WCA/Bronx Zoo Master
Plan, Wildlife Conservation
Society New York City
(unbuilt), by
Ayers/Saint/Gross Inc.**

"We appreciate the inclusive process and appealing methodology. This is a sensible strategic macro master plan with design guidelines written in detailed, believable, and good language. It holds up on the detail for the landscape and demonstrates a global level of basic decision-making for the new science center."



**Western Maryland
Welcome Center, Maryland
State Highway
Administration (unbuilt),
Frederick, Md., by Cho**



Benn Holback + Associates

"We commend the fine integration of this building with the paths and landscape. The ground becomes roof as the path marches over the top and provides a viewing platform of the battlefield. Its form mimics battle earthworks and touches the hallowed ground in a substantive, not just, formal way. It is ecologically sensitive in form and substance."



The Michael F. Trostel FAIA Award for Excellence in an Historic Preservation Project, Mellon Hall and Francis Scott Key Auditorium, St. John's College, Annapolis, Md., by Ziger/Snead LLP

"The Michael F. Trostel FAIA Award for Excellence in an Historic Preservation Project is given to this renovation because it makes a great building even better. The two small additions are really extensions of Neutra's vision. The new systems, technology, and finishes are very well done. While the building is preserved, the changes made are responsive to the original design intent."



Honorable Mention Awards

Clipper Mill Assembly Building, Struever Bros. Eccles & Rouse, Baltimore (unbuilt), by Cho Benn Holback + Associates

"This interesting siting and existing shell are enhanced by the complete insertion of new infill. The structure is so light that the original building can be seen in the background from within. The natural light is great!"



Paul Laurence Dunbar Community High School, Baltimore City Public School System (unbuilt), Baltimore, by GWWO Inc./Architects in association with Perkins & Will

"We really like the idea of this project. With very interesting moves, the architect took the existing building and transformed it into a much better building. The two main facades are radically and successfully transformed."



**GWWO, Inc./Architects
Design Studio, Struever
Bros. Eccles & Rouse Inc.,
Baltimore, by GWWO,
Inc./Architects**

"We are fascinated by the actual construction of this very sophisticated, double curvature wall. The spatial relationships it creates are very powerful. The organizational system, the spaces created, and the details are all very successful."



**St. Paul Place Garage, City
of Baltimore, Baltimore, by
Murphy & Dittenhafer Inc.,
Architect**

"This is an excellent urban project connecting two opposite sides of a very large block to the parking garage. The massing and scale are very successful from the street level—the garage reads as two separate buildings. The migratory patterns as the building moves up are excellent. The garage typology has been developed and furthered by this clever dealing with the infrastructure and pedestrians."



Associates Award

**Reforestation at
Greenwood Farm,
Conservation Reserve
Enhancement Program,
Donald and Freda Naill,
Westminster, Md., by
Manifold Design**

"This project demonstrates a radical potential for new material to emerge. The inherited, erratic-edged stream, offering opportunity for response and reaction, has inspired a creative plan and planting from which an amazingly beautiful tapestry will emerge."



Copyright 2005 The American Institute of Architects. All rights reserved. Home Page 

[Tell a Friend](#)

[Tell the Editor](#)

AIArchitect